

Proposed Pasco County Class 1 Landfill Concerns

Protectors of Florida's Legacy

March 14, 2007

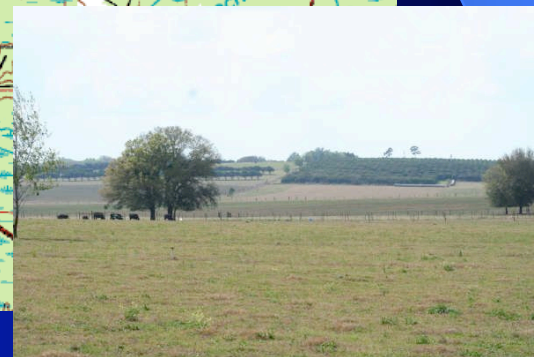
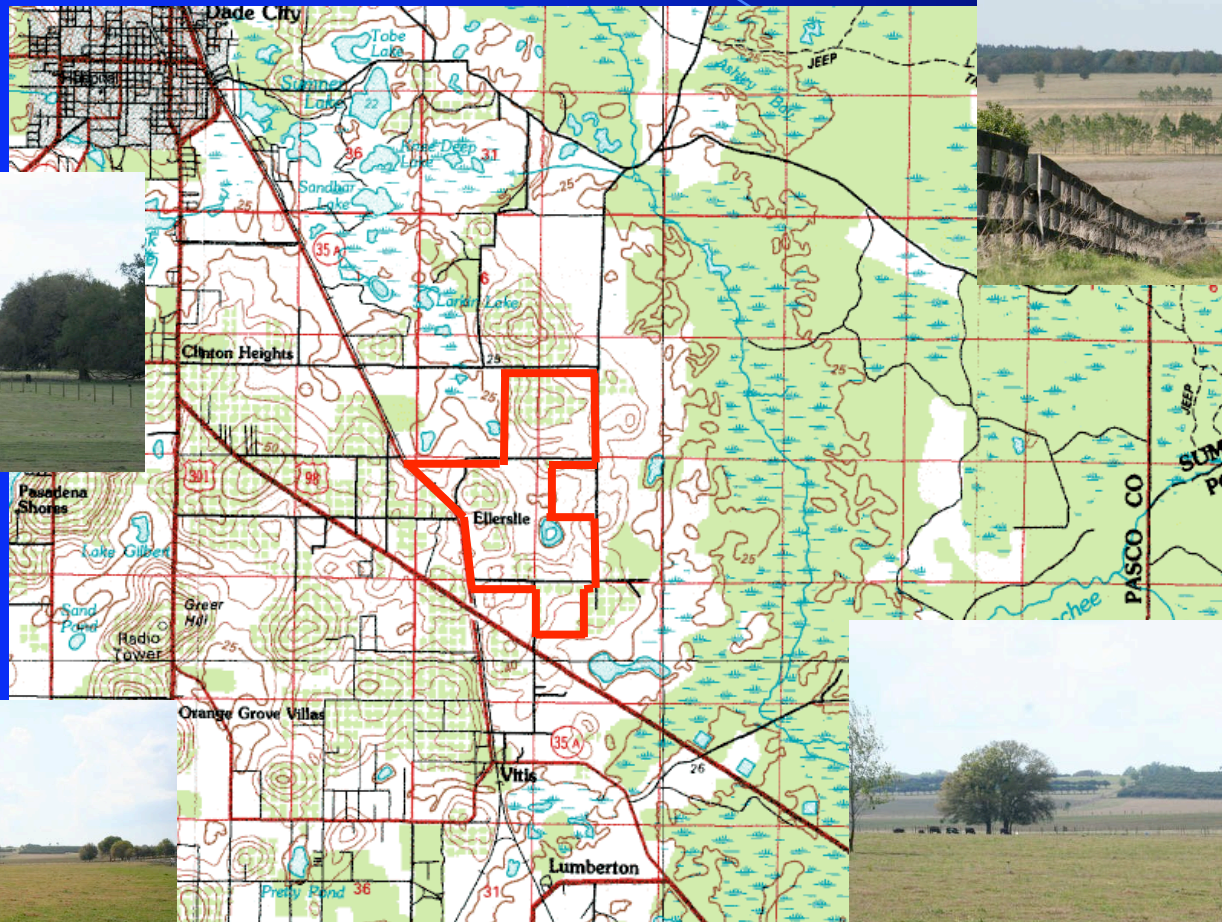
What is It?

- Class 1 Landfill
 - Municipal, Commercial, & Industrial Solid Waste
 - Category includes typical household garbage
 - Hazardous Waste
 - Asbestos
 - Biological/Biomedical
 - Contaminated Soils



Landfill = DUMP!

Where is It?



3/14/2007

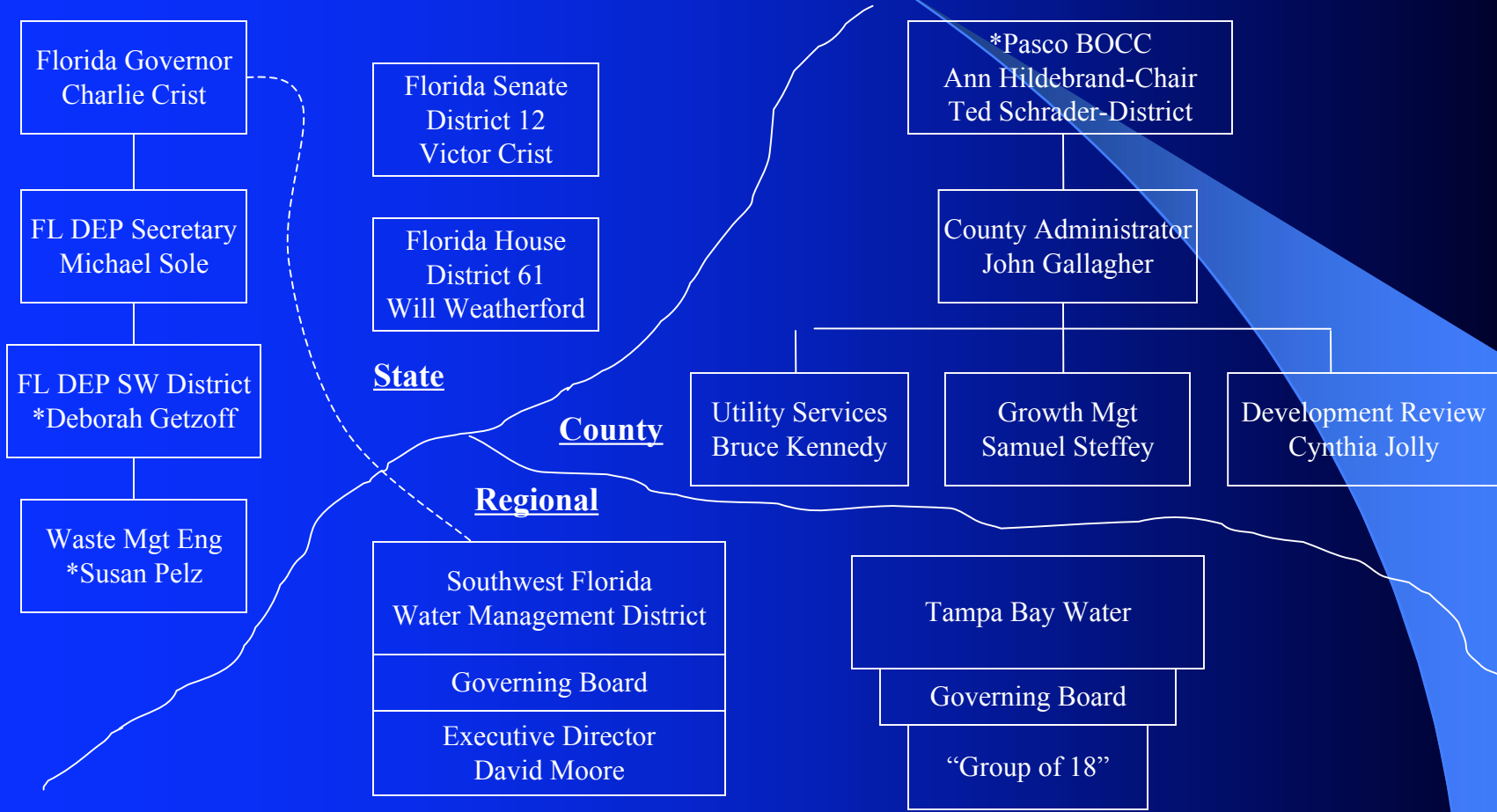
Why Should I Worry About It?

- The area around dumps are economically depressed & become “no growth zones”
- Dumps Pollute
 - Leachate affects the water supply
 - Wild animals feeding on waste can spread disease and larger bird populations can harm property
- Communities up to 7 miles away suffer with the smell of garbage, increased truck traffic, and lower property values

Background

- Pasco County Needs a Solution for its Municipal Solid Waste (MSW) resulting from new growth
 - Incinerator's (est. 1991) existing capacity insufficient
 - MSW “bypassing” incinerator adds to County's landfill decreasing its useful life
- A private enterprise (Angelo's Aggregate Materials Ltd.) is proposing a new Class 1 Landfill in eastern Pasco County near Dade City
- Permits submitted to Florida DEP with anticipated approvals in July & operational by Dec 2007

Background-The Players



Dangers with Proposed Landfill

- It is being built adjacent to the Green Swamp Water Basin which is a primary source of the Tampa Bay Region's water supply (2.5M citizens)
- Landfill applicant has NO experience operating a Class 1 Landfill & a record of DEP infractions operating less complex sites (C&D)
- Current Class 1 Landfill designs are not engineered to withstand catastrophic failure due to sinkholes (Pasco County is highest risk in FL)

Flaws in the Approval Process

- Florida DEP (Waste Management) does not have the regulatory authority to deny a permit because of a bad location (e.g. water supply risk), and
- Florida DEP (Waste Management) approval procedures for landfills do not require the review or approval of DEP Water Resource Management or Division of State Land departments

Landfill Engineering Concerns

- Wells only monitor leachate already contaminating the water supply (already too late)
- Landfill liners are 60 mils thick and not designed to support the overburden weight when a sinkhole occurs
- Containment ponds undersized for Katrina type hurricanes (e.g. Mosaic gypsum stack collapse near Alafia River ~\$30M, Piney Point ~\$160M)
- Geological testing insufficient to identify sinkhole risks (e.g. Tampa elevated toll road collapse ~\$100M)
- Contamination of the Floridan Aquifer ~\$\$\$\$\$

Economic Impact Concerns

- Higher value commercial, industrial, and residential developments will seek areas away from landfills
- In turn, new job creation greatly limited
- Seasonal residents/tourists readily relocate
- Affluent families relocate over time
- Existing property will devalue
- County revenue growth will slow significantly in the eastern county and potentially decline at current millage rates

Environmental Impact Concerns

- Adjacent Green Swamp Water Basin is considered a sensitive & critical area by the state of Florida serving the Withlacoochee, Hillsborough, Ocklawaha, & Peace Rivers
- Floridan Aquifer is very close to the surface in this area making contamination easier & quicker affecting the water supply of millions (2.5M for Tampa Bay Water alone)
- Hazardous wastes affecting humans & animals

Community Impact Concerns

- Pasco County Comprehensive Plan designates area as rural in nature and seeks to maintain natural beauty
- Ability to import MSW from anywhere via truck and railroad transportation increasing big truck traffic
- Dump odors carried over vast area with winds
- The dump becomes “eastern gateway” to Pasco County adversely affecting tourism

What Can I Do?

- Understand how a major Landfill will affect you
 - Your Business, Your Environment & Your Community
- Contact your elected County & State Representatives & Florida DEP to take a stand
- Contact Protectors of Florida's Legacy to have your "voice heard".
 - Carl Roth @ 813.713.4455
 - Cindy Baker @ 813.788.1587